

LEARN MORE: EDUCATIONAL OPPORTUNITY FUND (EOF)



What is EOF?

EOF provides access and opportunity for NJ residents to attend a NJ College and University.

What does EOF provide?

- 1

Academic support, advisement, and counseling


- 2

Financial assistance and information


- 3

College Summer Bridge Program and winter session support


- 4

Personal, career, and leadership development opportunities



Space is limited and admission into EOF is conducted at the campus level.

Who offers EOF?

Most NJ Colleges and Universities host EOF programs.

- ✓ State Colleges and Universities
- ✓ Independent Colleges and Universities
- ✓ Community Colleges
- ✓ Public Research Universities

How do I apply?

Contact the appropriate EOF campus program to discuss the application process.

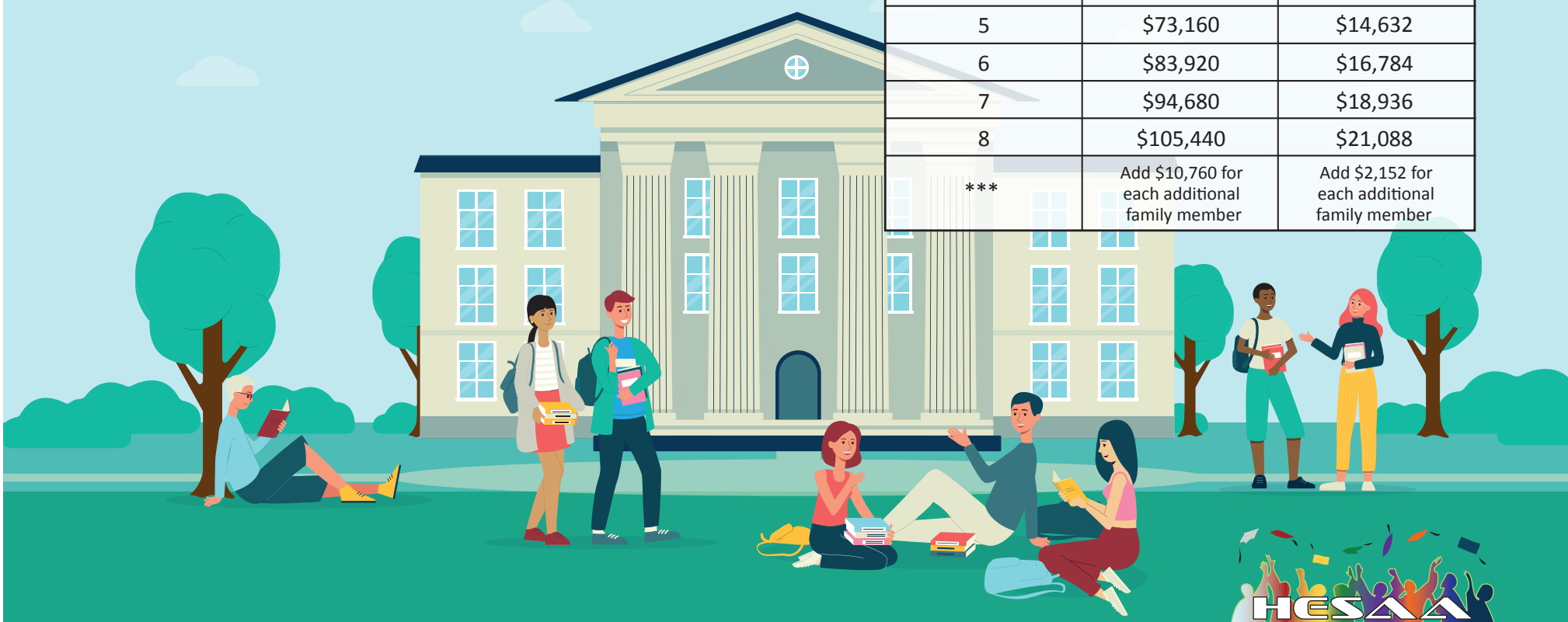
How do I find out if I am eligible?

Find more information regarding financial eligibility by scanning the QR Code below.



https://www.state.nj.us/highereducation/EOF/EOF_Eligibility.shtml

Household Size	Gross Income (Not to Exceed)	Max. Asset Cap (Not to Exceed)
1	\$30,120	\$6,024
2	\$40,880	\$8,176
3	\$51,640	\$10,328
4	\$62,400	\$12,480
5	\$73,160	\$14,632
6	\$83,920	\$16,784
7	\$94,680	\$18,936
8	\$105,440	\$21,088
***	Add \$10,760 for each additional family member	Add \$2,152 for each additional family member



www.hesaa.org